

# **vSphere Client RDP Plug-in Installation and User Guide**

**1.0.0.2**

You can find the latest documentation for this product here:

<http://xtravirt.com/vsphere-client-rdp-plugin-in>

If you have any feedback about the product or documentation, please submit to:

[information@xtravirt.com](mailto:information@xtravirt.com)

© 2010 Xtravirt® Ltd. All rights reserved. The Xtravirt logo and design are registered trademarks of Xtravirt Ltd. All other marks and names mentioned herein may be trademarks of their respective companies.

Warranty, to the maximum extent permitted by applicable mandatory law, Xtravirt and its licensors provide the software without any warranties of any kind, express, implied, statutory, or in any other provision of the [EULA](#) or communication with you, and Xtravirt and its licensors specifically disclaim any implied warranties of merchantability, fitness for a particular purpose, and non-infringement.

**Xtravirt Ltd**

Dorset House  
Regent Park  
297 Kingston Road  
Leatherhead  
Surrey  
KT22 7PL  
United Kingdom

# Contents

<b>About</b>	<b>4</b>
Intended Audience .....	4
Document Feedback .....	4
Technical Support .....	4
<b>1 Overview</b>	<b>5</b>
<b>2 System Requirements</b>	<b>6</b>
<b>3 Installing the Plug-in</b>	<b>7</b>
Prerequisites .....	7
Installation .....	7
<b>4 Configuring the Plug-in</b>	<b>9</b>
<b>5 Making a Connection</b>	<b>10</b>
<b>6 FAQ</b>	<b>11</b>
Known Issue - Plug-in fails to load .....	11
The identity of the remote computer cannot be verified. Do you want to connect anyway? .....	11
The identity of the remote computer cannot be verified. Do you want to connect anyway? (After configuring the Disable Security Warning option) .....	12
I cannot connect to a remote desktop? .....	12

## About

The *vSphere Client RDP Plug-in Installation and User Guide* describes how to install and configure the Xtravirt® vSphere Client RDP Plug-in.

## Intended Audience

This guide is intended for anyone wishing to install Xtravirt® vSphere Client RDP Plug-in. It has been written for administrators who have familiarity or understanding of VMware® vSphere.

## Document Feedback

Xtravirt welcomes any feedback for documentation improvement. Comments should be submitted to [information@xtravirt.com](mailto:information@xtravirt.com).

## Technical Support

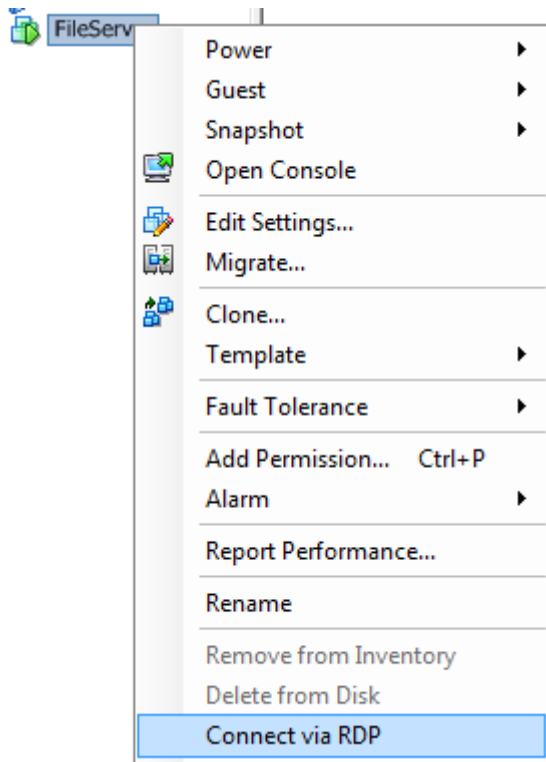
Technical support is not provided under the terms of the [End User License Agreement](#).

Product feedback and fault identification is welcomed, and comments should be submitted to [information@xtravirt.com](mailto:information@xtravirt.com).

# 1 Overview

The Xtravirt vSphere RDP Plug-in provides integration of the Windows Remote Desktop tool with the VMware vSphere Client.

Utilising Remote Desktop to connect virtual machines provides a better user experience compared to the built-in VMware console as well as performing better across WAN connections.



**Figure 2-1:** Using the RDP plug-in to connect to a virtual machine

The plug-in can be easily installed and removed, and adheres to standards outlined in the plug-in architecture references provided by VMware. Additional configuration options are also available.

## 2 System Requirements

- VMware vCenter Server version 4 and above
- Version 4.0.0 or greater of the VMware vSphere Client
- Microsoft .NET Framework 3.5. This can be downloaded from:  
<http://www.microsoft.com/downloads/details.aspx?FamilyId=333325FD-AE52-4E35-B531-508D977D32A6&displaylang=en>
- Version 7.0 or greater of the Microsoft Remote Desktop Connection client. Download links are provided in the following KB Article: <http://support.microsoft.com/kb/969084>

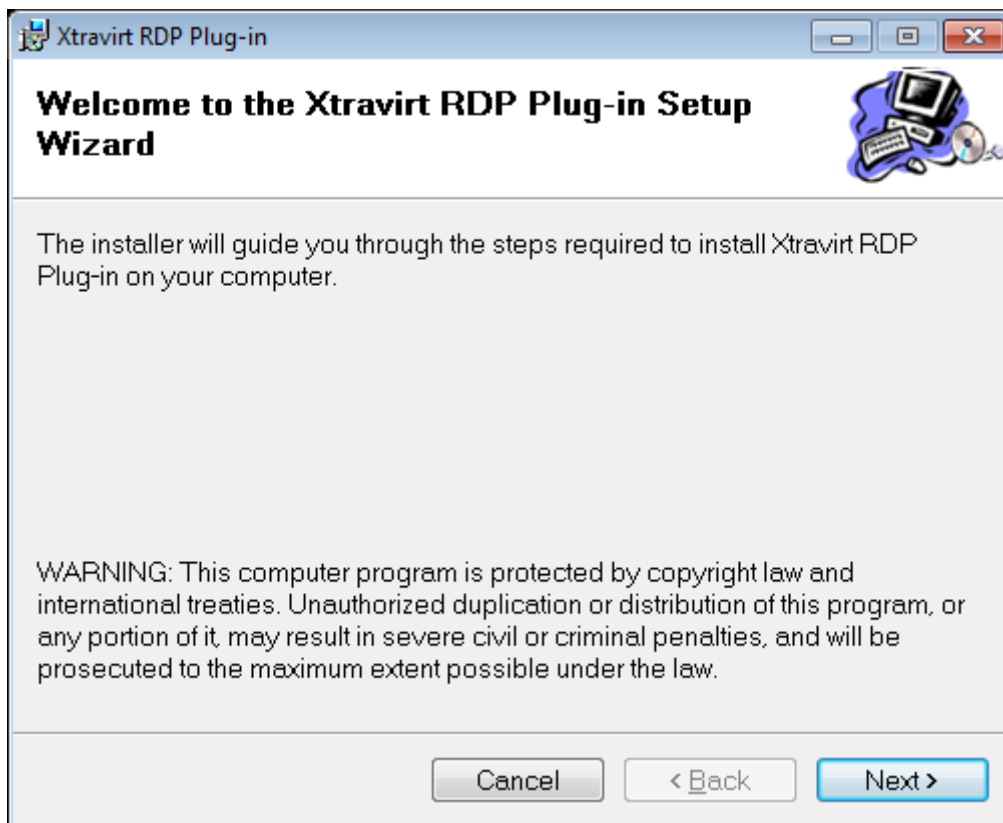
## 3 Installing the Plug-in

### Prerequisites

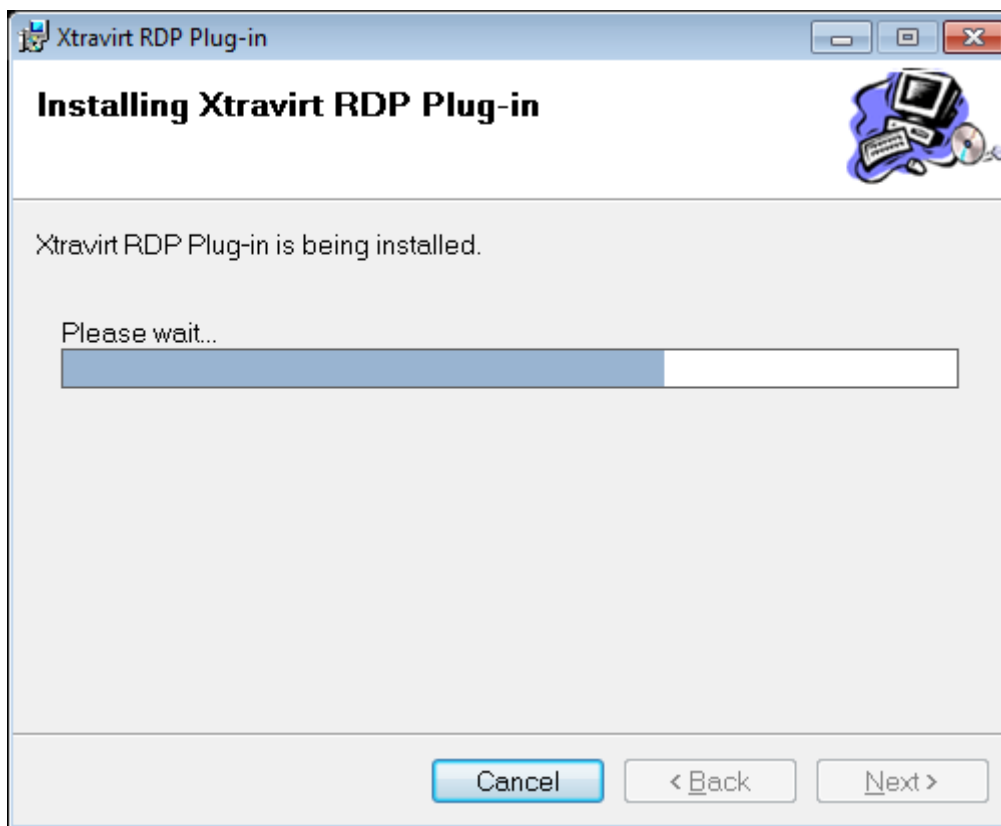
- Ensure that the PC has an up to date vSphere version of the VI Client installed and that it can successfully communicate with the vCenter server.
- Ensure that the VI Client is not running.

### Installation

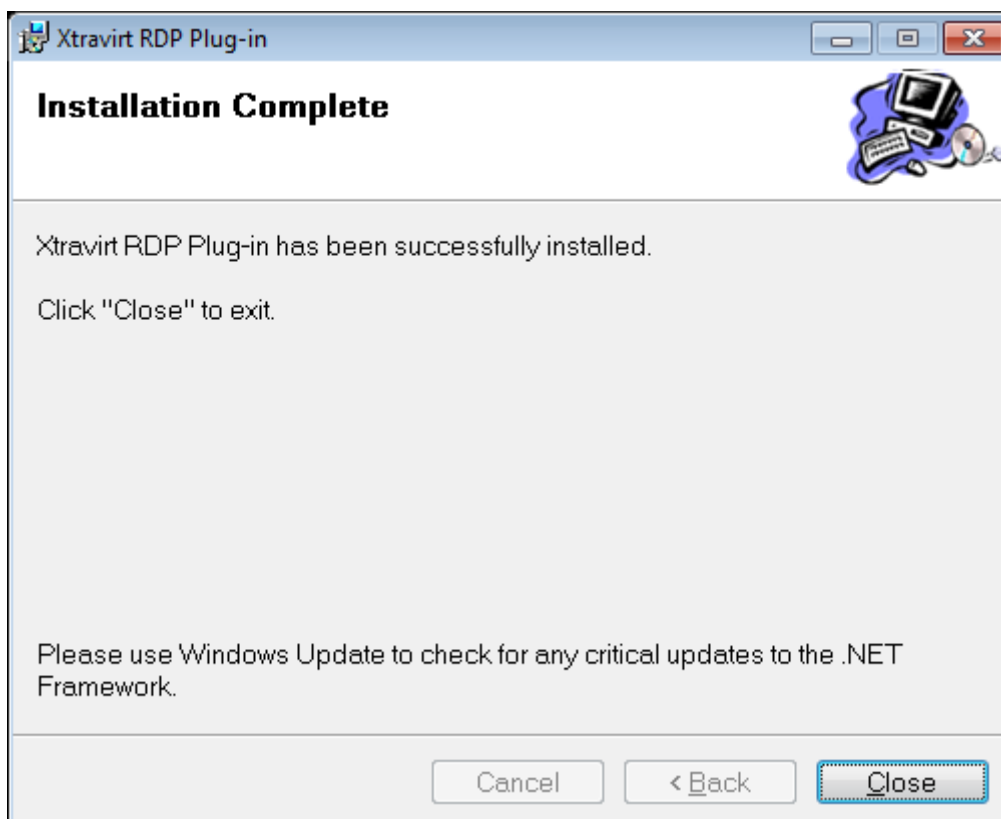
Run the **vSphere Client RDP Plug-in.msi**. An installation wizard will appear. Click **Next**.



The installation will start and the required files will be copied to your system.



Installation complete. Click **Close** to exit the Setup Wizard.

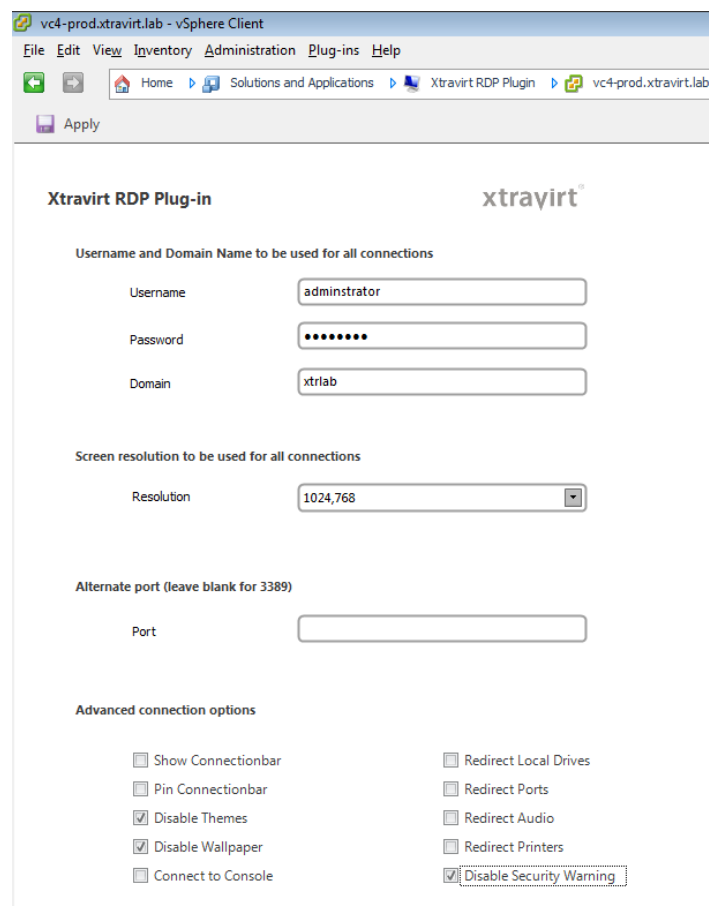




## 4 Configuring the Plug-in

Launch the **VMware vSphere Client** and login.

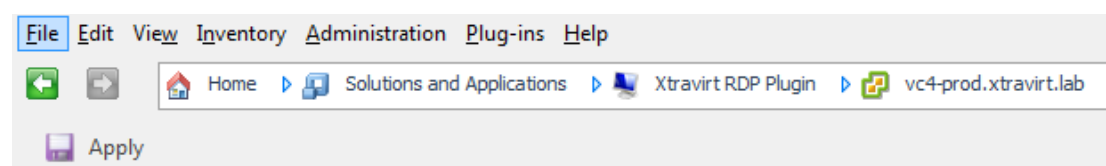
Select the **Home** view. Within the **Solutions and Application** section, select the **Xtravirt RDP Plugin** icon. The configuration screen will be displayed.



This allows the configuration of default options to use on all remote desktop connections made through the plug-in. Setting optional **username**, **password** and **domain** fields will enable automatic sign on to a virtual machine upon connection. **Screen resolution** and **advanced connection** options mimic the standard options available through the Microsoft® Remote Desktop Client.

These configuration settings will be retained between vSphere Client sessions. As such, they do not need to be re-configured each time the client is launched.

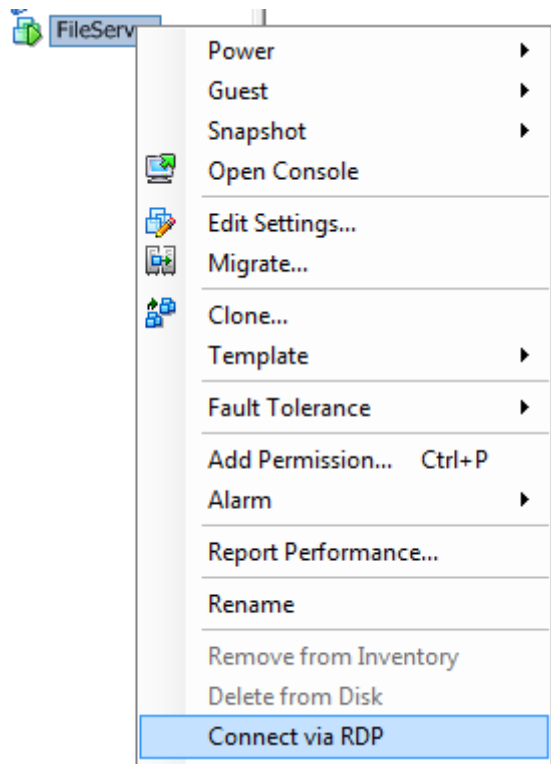
Once configuration options have been made, click **Apply** to save.



## 5 Making a Connection

Once the plug-in options have been set and applied, the plug-in can be used to initiate remote desktop connections to virtual machines.

**Right-click** a virtual machine and select the **Connect via RDP** option from the context menu. A remote desktop connection will be started.



## 6 FAQ

### Known Issue - Plug-in fails to load

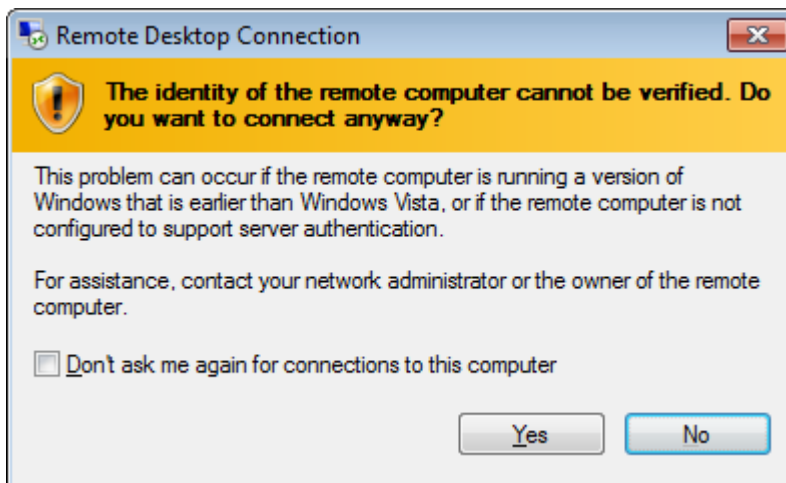
You receive the following message when running the vSphere Client.

“Plugin to enable RDP access in vSphere VI Client. The plug-in failed to load on server(s) "servername here" due to the following error: The type initializer for 'vc\_functions' threw an exception.”

This is currently a known issue affecting some systems.

### The identity of the remote computer cannot be verified. Do you want to connect anyway?

You receive the following dialog box when starting a connection.



#### Resolution:

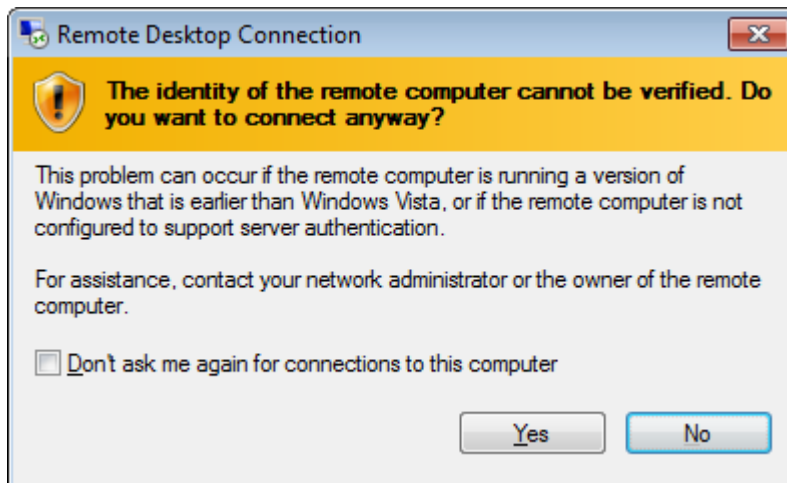
This is standard Windows behaviour. To hide this dialog, select the Disable Security Warning option in the Plug-in configuration screen.

#### Advanced connection options

- |   |  |
|---|--|
| <input type="checkbox"/> Show Connectionbar | <input type="checkbox"/> Redirect Local Drives               |
| <input type="checkbox"/> Pin Connectionbar  | <input type="checkbox"/> Redirect Ports                      |
| <input type="checkbox"/> Disable Themes     | <input type="checkbox"/> Redirect Audio                      |
| <input type="checkbox"/> Disable Wallpaper  | <input type="checkbox"/> Redirect Printers                   |
| <input type="checkbox"/> Connect to Console | <input checked="" type="checkbox"/> Disable Security Warning |

## The identity of the remote computer cannot be verified. Do you want to connect anyway? (After configuring the Disable Security Warning option)

You receive the following dialog box when starting a connection after configuring the Disable Security Warning option.



### Resolution:

This is standard Windows behaviour when you are redirecting local drives, ports or printers in to a remote desktop session. This is expected behaviour.

## I cannot connect to a remote desktop?

You cannot connect to a remote desktop after configuring the plug-in.

### Resolution:

On the virtual machine that you are trying to connect to

- Ensure that any firewalls (Windows or 3<sup>rd</sup> party) allow remote desktop connections.
- Ensure that the user account you are attempting to connect with has rights to connect via remote desktop on the target machine
- If there are any firewalls in between your VI Client and target virtual machine, ensure that port 3389 is allowed through the firewall.